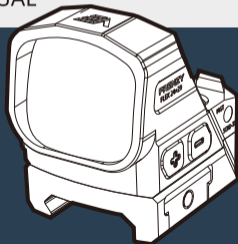


VECTOR OPTICS®

FREQUENCY

FLEX RED DOT SIGHT USER MANUAL



PREMIUM

READ IT BEFORE USE!!!

READ AND UNDERSTAND THE CONTENTS OF YOUR FIREARM'S AND SCOPE MANUAL. FOLLOW ALL STANDARD SAFETY PRECAUTIONS AND PROCEDURES DURING FIREARM OPERATION.

▼ *Scan the QR code to learn more about VectorOptics*



VECTOROPTICS



USER MANUAL



FACEBOOK



INSTAGRAM



中文说明书



*NEVER LOOK AT THE SUN THROUGH THE RED DOT SIGHT (OR ANY OTHER OPTICAL INSTRUMENT).
IT MAY PERMANENTLY DAMAGE YOUR EYES.*

MAKE SURE FIREARMS ARE UNLOADED AND POINTED IN THE SAFE DIRECTION.

CONTENTS

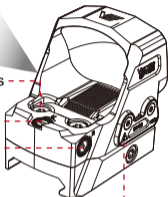
FOOTPRINT & MOUNTING	4
SCREWS	5
ZEROING	6
TURNING ON & ILLUMINATION ADJUSTMENT	6
BATTERY EXCHANGE	7
MAINTENANCE	8
STORAGE	8
RETICLE	9
WARRANTY	10



Connection Screws

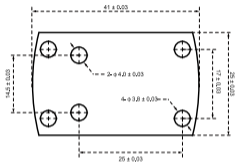
Elevation

Windage



Battery Compartment

MGT™ Red Dot Footprint



Setting: mm

MOUNTING

The red dot sight is intended for use on pistol slides. It adopts an industry-standard mounting interface and is compatible with the footprint that meets the criteria shown above. The red dot sight can also accept a picatinny or dovetail mount with a compatible footprint.

SCREWS MAY COME WITH THE SIGHT:

#1
M3x0.5



#2
M3.5x0.6



#3
M3.5x0.6



#4
M4x0.7



Effective Length:

11MM

8MM

10MM

7MM

Head Type:

Light Tapered

Tapered

Tapered

Tapered

Head Drive:

Torx T10

Torx T10

Torx T10

Torx T10

#5
M4x0.7



#6
#6-32x0.35



#7
#6-32x0.45



#8
#6-32x0.45



Effective Length:

8.5MM

7MM

9.5MM

9.5MM

Head Type:

Tapered

Tapered

Light Tapered

Light Tapered

Head Drive:

Torx T10

Torx T10

Torx T10

Hexago

ZEROING

The sight features elevation and windage adjustments. Referring to the point of impact you will need to adjust both windage and elevation screws. The elevation is the vertical (up and down) adjustment, usually on the top of the sight. Windage is the horizontal (left-to-right) adjustment, usually on the right of the sight. With the sight is mounted aim at a target 33 yards away. Slowly shoot a small 3 to 5 round test group onto your target.

TURNING ON & ILLUMINATION ADJUSTMENT

The sight is activated by using the digital on/off switch placed on the left of the sight. The sight has 9 levels of visible & 2 NV dots. Press the '+' switch for 0.5 second to turn the unit on. Subsequently, pressing the '+' switch will increase the dot intensity. Press the '-' switch will decrease the dot intensity. Press and hold the '-' switch for more than 3 seconds to turn the sight off.

Motion Sensor (MOS) : If the sight comes with this feature, it will power off when it is at rest after a few minutes and power on when it senses any motion.

BATTERY EXCHANGE

Our red dot sight is powered by 1 piece of the CR1632 button battery. Should the dot grows dim or not turn on, you will need to exchange the battery. To exchange the CR1632 battery, release the two screws on the battery compartment tray. Pry the tray out, put or replace a new CR1632 battery. Push back the tray and fasten the screws.



WARNING

- **INGESTION HAZARD:** This product contains a button cell or coin battery.
- **DEATH** or serious injury can occur if ingested.
- A swallowed button cell or coin battery can cause internal chemical burns in as little as 2 hours.
- Keep new and used batteries out of reach of children.
- Seek immediate medical attention if a battery is suspected to be swallowed or inserted inside any part of the body.
- Battery misuse or abuse may result in leakage, fire or explosion.



MAINTENANCE

Your red dot sight, though amazingly tough, is a precision instrument that deserves reasonable cautious care.

- When cleaning the lens, first blow away any dirt and dust, or use a soft lens brush. Fingerprints and lubricants can be wiped off with lens tissue, or soft cleancotton cloth, moistened with lens cleaning fluid.
- All moving parts of the red dot sight are permanently lubricated. Do not try to lubricate them.
- No maintenance is needed on the red dot sight's outer surface, except to occasion- ally wipe off dirt or fingerprints with a soft cloth.
- Use lens covers whenever convenient.

STORAGE

Avoid storing the red dot sight in hot places, such as the passenger compartments of vehicles on hot days. The high temperatures could adversely affect the lubricants and sealants. A vehicle's trunk, a gun cabinet, or a closet is preferable. Never leave the red dot sight where direct sunlight can enter either the objective lens. Damage may result from the concentration (burning glass effect) of the sun's rays.

RETICLE PATTERN

Multi Reticle (If applicable)

PRESS THE '+' BUTTON FOR MORE THAN 3 SECONDS TO SWITCH THE RETICLE.



VECTOR OPTICS TAILED VIP LIFETIME WARRANTY

Your VectorOptics Continental, Tauron, Paragon, Scrapper, and Frenzy line products are covered by our T-VIP lifetime warranty. We will, at our option, either repair or replace your VectorOptics product without any cost if it is damaged or defective. If we can't repair your damaged product, we will replace it with a brand new one in perfect condition. We proudly stand behind our products. You have our word that we will do what it takes to retain your business as a satisfied customer. You can count on our T-VIP lifetime warranty.

- **Unlimited full lifetime warranty**
- **Reply to you in 1 working day**
- **Free repair or replacement**
- **Fully transferable**
- **No invoice or receipt is needed**
- **No question was asked; however, we appreciate your feedback**
- **We pay for shipping back to you**

This warranty does not cover product loss, theft, deliberate damage, abuse, misapplication, or modification. This warranty does not apply to electronic components or batteries.

For warranty service please contact our Customer Service Department online at service@vectoroptics.com for return instructions. If you need to return the product, please ensure the shipment and keep the tracking records. We can not be responsible for your product until it has been received by our Customer Service Department. For products not directly purchased from us, please contact the local dealer for applicable warranty info.

Any warranty must be registered and complete warranty terms by the link:

warranty.vectoroptics.com

We thank you for your business. Be Safe and Have Fun!



FRENZY

RED DOT SIGHT

Manual # Frenzy Series

2026030603



🌐: www.vectoroptics.com

@vector_optics