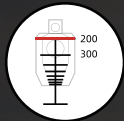
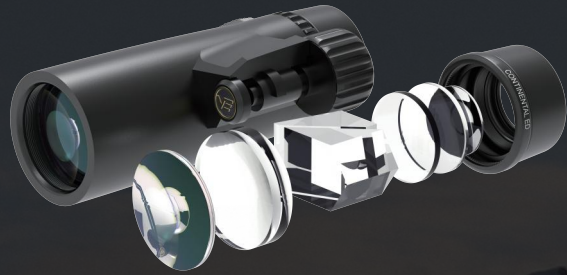


NATURE OBSERVATION

CATAWLOG
2026

VE VECTOR OPTICS®

NATURE OBSERVATION



RANGING RETICLE
Built-In Ranging for Quick Distance Estimation



HD GLASS
High Definition Glass



MULTI-COATED WINDOW
Minimizes Distortion, Enhances Clarity,
Ensures Durability



LARGE FIELD OF VIEW
See More with Every Glance



FIELD FLATTENING OPTICAL SYSTEM
Edge-to-Edge Clarity Without Distortion



ERGONOMIC BODY DESIGN
Comfortable Grip for Steady Viewing



7075-T6 AIRCRAFT ALUMINUM ALLOY HOUSING
Ultra-Lightweight, Stable and Durable



DIGITAL CONTROL
Tap to Adjust Illumination Intensities



MIN. FOCUS DISTANCE
Sharp Focus on Nearby Subjects



ABBE-KOENIG PRISM
High Light Transmission for Brighter Images



PORRO PRISM
Classic Design with Wide 3D Depth



ROOF PRISM
Slim, Durable, and Easy to Handle



TRAVEL COMPANION
Lightweight Optics for Everyday Adventures



TWILIGHT PERFORMANCE
Bright, Clear View at Dawn and Dusk



BIRD WATCHING
Sharp, Clear Image with a Comfortable Grip

INFINITY BEGINS WITH FIDELITY

Designed for uncompromising clarity and precision, Vector Optics' outdoor lineup is built to meet the demands of dedicated marksmen, hunters, and outdoor enthusiasts. From the range to the backcountry, our optics deliver exceptional brightness, rugged durability, and dependable performance. Proven in real-world conditions, they're the trusted choice when every detail matters.



Vector Optics



TABLE OF CONTENTS

BINOCULAR

MONOCULAR

RANGEFINDING

SPOTTING SCOPE

RANGE FINDER



BINOCULARS





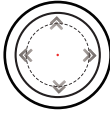
COMPETITION

Vector Optics binoculars, for competition, are engineered for precision-focused shooting environments, offering sharp, high-resolution detail and rapid, efficient target observation—allowing shooters to assess results quickly and maintain full focus on their performance.

- High-Resolution Detail

- Efficient Observation

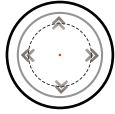
CONTINENTAL



/// SPECIFICATIONS

SKU	Magnification & Objective Lens Diameter	Eye Relief	Focus Type	Minimum Focal Distance	Angular Field of View	Linear Field of View	Dimensions	Weight (net)
SCBO-19	15 x 56	13.9 mm	Center	3.7 m	4.0°	210 ft @ 1000 yds 70 m @ 1000 m	194 x 16 mm (7.64 x 0.63 in)	1302 g / 45.93 oz

CONTINENTAL



/// SPECIFICATIONS

SKU	Magnification & Objective Lens Diameter	Eye Relief	Focus Type	Minimum Focal Distance	Angular Field of View	Linear Field of View	Dimensions	Weight (net)
SCBO-07	10 x 42	12.2 mm	Center	2.5 m	7.0°	36.6 ft @ 1000 yds 12.2 m @ 1000 m	147 x 130 x 55 mm (5.79 x 5.12 x 2.17 in)	808 g / 28.5 oz



BINOCULARS





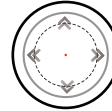
HUNTING & HIKING - COMPACT

Designed for lightweight outdoor adventures, Vector Optics binoculars focused on the compact size combine easy portability with true-to-life visuals and rugged reliability, making them ideal for hikers and hunters who need quick observation on the move.

- Compact Portability

- True-To-Life Visuals

CONTINENTAL



With Binocular Harness



/// SPECIFICATIONS

SKU	Magnification & Objective Lens Diameter	Eye Relief	Focus Type	Minimum Focal Distance	Angular Field of View	Linear Field of View	Dimensions	Weight (net)
SCBO-25	8 x 32	17.5 mm	Center	2.5 m	8.1°	426 ft @ 1000 yds 142 m @ 1000 m	137 x 118 mm (5.79 x 5.12 in)	550 g / 19.4 oz
SCBO-26	10 x 32	15.5 mm	Center	2.5 m	6.5°	342 ft @ 1000 yds 114 m @ 1000 m	137 x 118 mm (5.79 x 5.12 in)	550 g / 19.4 oz

PARAGON



With Binocular Harness



/// SPECIFICATIONS

SKU	Magnification & Objective Lens Diameter	Eye Relief	Focus Type	Minimum Focal Distance	Angular Field of View	Linear Field of View	Dimensions	Weight (net)
SCBO-23	8 x 32	14.7 mm	Center	3.5 m	8.1°	426 ft @ 1000 yds 142 m @ 1000 m	109 x 116 mm (4.29 x 4.57 in)	500 g / 17.6 oz
SCBO-24	10 x 32	13.6 mm	Center	2.5 m	6.5°	340 ft @ 1000 yds 113 m @ 1000 m	109 x 116 mm (4.29 x 4.57 in)	500 g / 17.6 oz



BINOCULARS





HUNTING & HIKING - UNIVERSAL

Built for more demanding outdoor use, Vector Optics standard binoculars deliver brighter images, enhanced low-light clarity and rugged reliability, helping hunters and explorers observe wildlife with confidence in diverse environments.

- For Universal Use

- Large Field of View

CONTINENTAL



/// SPECIFICATIONS

SKU	Magnification & Objective Lens Diameter	Eye Relief	Focus Type	Minimum Focal Distance	Angular Field of View	Linear Field of View	Dimensions	Weight (net)
SCBO-05	8 x 42	19.5 mm	Center	2.5 m	8.1°	42.6 ft @ 1000 yds 14.2 m @ 1000 m	147 x 130 mm (5.79 x 5.12 in)	837 g / 29.5 oz
SCBO-06	10 x 42	12.2 mm	Center	2.5 m	7°	366 ft @ 1000 yds 122 m @ 1000 m	147 x 130 mm (5.79 x 5.12 in)	810 g / 28.6 oz
SCBO-14	8 x 42 OD Green	19.5 mm	Center	/	8.1°	426 ft @ 1000 yds 142 m @ 1000 m	147 x 130 mm (5.79 x 5.12 in)	841 g / 29.7 oz
SCBO-15	10 x 42 OD Green	12.2 mm	Center	/	7.0°	366 ft @ 1000 yds 122 m @ 1000 m	147 x 130 mm (5.79 x 5.12 in)	804 g / 28.4 oz

CONTINENTAL



/// SPECIFICATIONS

SKU	Magnification & Objective Lens Diameter	Eye Relief	Focus Type	Angular Field of View	Angular Field of View	Linear Field of View	Dimensions	Weight (net)
SCBO-10	8 x 56	20 mm	Center	3.5 m	7.2°	378 ft @ 1000 yds 126 m @ 1000 m	194 x 161 mm (7.64 x 6.34 in)	1269 g / 44.8 oz
SCBO-09	15 x 56	13.9 mm	Center	3.7 m	4.0°	210 ft @ 1000 yds 70 m @ 1000 m	194 x 161 mm (7.64 x 6.34 in)	1302 g / 45.9 oz

PARAGON



/// SPECIFICATIONS

SKU	Magnification & Objective Lens Diameter	Eye Relief	Focus Type	Minimum Focal Distance	Angular Field of View	Linear Field of View	Dimensions	Weight (net)
SCBO-12	8 x 42 HD	19 mm	Center	3 m	6.6°	329 ft @ 1000 yds 110 m @ 1000 m	150 x 123 mm (5.91 x 4.84 in)	717 g / 25.3 oz
SCBO-13	10 x 42 HD	19 mm	Center	3.5 m	6°	299 ft @ 1000 yds 100 m @ 1000 m	150 x 123 mm (5.91 x 4.84 in)	711 g / 25.1 oz

FORESTER



/// SPECIFICATIONS

SKU	Magnification & Objective Lens Diameter	Eye Relief	Focus Type	Minimum Focal Distance	Angular Field of View	Linear Field of View	Dimensions	Weight (net)
SCBO-16	7 x 50	20 mm	Center	6 m	6.67°	329.9 ft @ 1000 yds 110 m @ 1000 m	185 x 192 mm (7.28 x 7.56 in)	850 g / 30 oz
SCBO-17	10 x 50	18 mm	Center	10 m	5.7°	299 ft @ 1000 yds 100 m @ 1000 m	185 x 192 mm (7.28 x 7.56 in)	850 g / 30 oz
SCBO-18	12 x 50	15 mm	Center	16 m	5.2°	269.9 ft @ 1000 yds 90 m @ 1000 m	185 x 192 mm (7.28 x 7.56 in)	850 g / 30 oz



MONOCULAR



PARAGON



COMPETITION

With a lightweight, portable design, Vector Optics monocular, for competition, allows shooters to quickly locate and lock onto targets, while its reticle markings assist with distance estimation for precise long-range shooting.



/// SPECIFICATIONS

SKU	Magnification & Objective Lens Diameter	Minimum Focal Distance	Linear Field of View	Prism Glass	Angular Field of View	Length	Weight (net)
SCMO-01	8 x 42	2 m	37.8 ft @ 1000 yds 12.6 m @ 1000 m	BaK-4	7.2°	141 mm / 5.6 in	414 g / 14.6 oz

FORESTER



HUNTING

Compact and easy to carry, Vector Optics monocular, for hunting, delivers bright, wide-field views even in low light, with weather-resistant construction to support hunters in any condition.



/// SPECIFICATIONS

SKU	Magnification & Objective Lens Diameter	Minimum Focal Distance	Linear Field of View	Prism Glass	Angular Field of View	Length	Weight (net)
SCMO-04	8 - 16 x 56 ED	3 m	331 ft @ 1000 yds 110 m @ 1000 m	BaK-4	4.5 - 3.15 °	193 mm / 7.6 in	521 g / 18.4 oz
SCMO-02	10 x 50 ED	2.5 m	31.5 ft @ 1000 yds 10.5 m @ 1000 m	BaK-4	6.0 °	163 mm / 6.4 in	497 g / 17.5 oz

FORESTER



HIKING

Designed for lightweight portability, Vector Optics monocular, for hiking, enables fast dynamic tracking while delivering true-to-life color, perfect for hikers and outdoor-watchers on the move.

/// SPECIFICATIONS

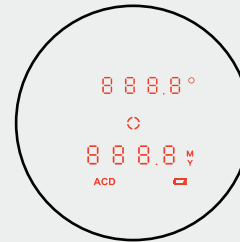
SKU	Magnification & Objective Lens Diameter	Minimum Focal Distance	Linear Field of View	Prism Glass	Angular Field of View	Length	Weight (net)
SCMO-03	8 x 32	2 m	417 ft @ 1000 yds 139 m @ 1000 m	BaK-7	8.0°	130 mm / 5.1 in	210 g / 7.4 oz



RANGEFINDING



PARAGON



Combining precision ranging with high-clarity observation, rangefinding binoculars enable faster, more continuous decisions in hunting and long-range shooting. By allowing users to identify, confirm, and range targets in one uninterrupted view, they eliminate device switching and improve accuracy in complex terrain.



/// SPECIFICATIONS

SKU	Magnification & Objective Lens Diameter	Exit Pupil	Range to Reflective Target	Range to Big Tree	Range to Deer	Accuracy	Size	Weight (net)
SCBRF-02	10 x 42	4.2 mm / 0.16 in	≤ 2500 yd	≤ 1500 yd	≤ 800 yd	±1@<300yd ±2@300-1500yd	113 x 157 mm (4.45 x 6.18 in)	886 g / 31.25 oz



SPOTTING SCOPE





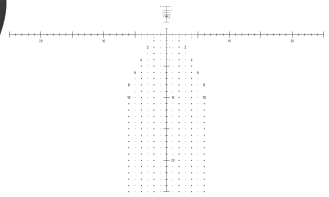
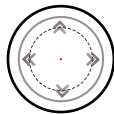
LONG-RANGE OBSERVATION

Vector Optics spotting scopes offer high-magnification, crystal-clear imaging for detailed target observation, with a reticle designed to assist precise distance estimation for accurate long-range shooting.

- High-Magnification Detailed Viewing

- Ranging

CONTINENTAL-COMPETITION



/// SPECIFICATIONS

SKU	Magnification & Objective Lens Diameter	Exit Pupil	Eye Relief	Focus Type	Angular Field of View	Dimensions	Weight (net)
SCSS-02	12 - 40 x 60 FFP	3.0 - 1.0 mm	30 mm	Center	3.4-1.1°	/	1659 g / 58.5 oz
SCSS-03	20 - 60 x 80 FFP	4.0 - 1.3 mm	30 mm	Center	2.3-0.8°	/	2227 g / 78.6 oz

PARAGON

ED

WITH
TRIPOD

COMPACT

LIGHT
WEIGHT

FMC



/// SPECIFICATIONS

SKU	Magnification & Objective Lens Diameter	Exit Pupil	Eye Relief	Focus Type	Angular Field of View	Dimensions	Weight (net)
SCSS-10	Paragon 8 - 24 x 50 ED	6.2 - 2.1 mm	20 - 16.7 mm	Center	5.0 - 2.5°	/	665 g / 23.46 oz
SCSS-11	Paragon 9 - 27 x 56 ED	6.2 - 2.1 mm	20 - 16.7 mm	Center	4.6 - 2.3°	/	709 g / 25.01 oz

FORESTER

WITH
TRIPOD

COMPACT

LIGHT
WEIGHT

FMC



/// SPECIFICATIONS

SKU	Magnification & Objective Lens Diameter	Exit Pupil	Eye Relief	Focus Type	Angular Field of View	Dimensions	Weight (net)
SCSS-01	Forester 20 - 60 x 60	3.0 - 1.0 mm	16.5 - 13 mm	Center	19.1 - 9.6°	/	713 g / 25.15 oz





RANGE FINDER





Precision-engineered for demanding conditions, Vector Optics rangefinders deliver accurate distance measurements and exceptionally clear imaging through advanced lens systems. Selected models connect to the app for advanced ballistic calculations, giving hunters, competitive shooters, and outdoor enthusiasts the confidence and reliability they need to make every shot count.

- Accurate Ranging

- Clear Imaging



PARAGON FORESTER



	Paragon 6x25 GenII	Paragon 6x21 GenII BDC	Paragon 7x25 GenIII BDC	Forester 6x21 GenII
SKU	SCRF-20	SCRF-S20	SCRF-S24	SCRF-16
Exit Pupil	4.17 mm / 0.16 in	4.17 mm / 0.16 in	3.57 mm / 0.14 in	3.5 mm / 0.14 in
Range to Reflective Target	≤ 2000 yd / 1850 m	≤ 2000 yd / 1850 m	≤ 2400 yd / 2195 m	≤ 1600 yd / 1500 m
Range to Big Tree	≤ 1300 yd / 1200 m	≤ 1300 yd / 1200 m	≤ 1600 yd / 1463 m	≤ 900 yd / 825 m
Range to Deer	≤ 900 yd / 825 m	≤ 900 yd / 825 m	≤ 1100 yd / 1006 m	≤ 700 yd / 640 m
Range to Golf Flag	≤ 500 yd / 460 m	≤ 500 yd / 460 m	≤ 600 yd / 549 m	≤ 450 yd / 410 m
Accuracy	±1 yd	±1 yd	±1 yd	±1 yd
Display Type	LCD	OLED	OLED	LCD
Size	105 x 76 mm 4.1 x 3 in	105 x 76 mm 4.1 x 3 in	118 x 76 mm 4.6 x 3 in	98.5 x 76 mm 3.8 x 3 in
Weight (net)	183 g / 6.5 oz	137 g / 4.83 oz	184 g / 6.5 oz	130 g / 4.6 oz

