



Please refer to user manual carefully before using

## FIVE YEARS LIMITED WARRANTY

Your ROKSTAD product is warranted free of defects in materials and workmanship for a period of 5 years from the time of purchase by the original purchaser. This warranty covers accidental damage, as well as any defects in materials and workmanship. Damages caused by misuse or improper handling are not covered. In the event of a defect under this warranty, we promise to repair or replace your product and ship it back to you absolutely free of charge. Also, this warranty is null and void if modification or maintenance is provided by someone other than Vector Optics. This warranty is non-transferable. For products not directly purchased from us, please contact the local dealer for an applicable warranty.

<https://www.vectoroptics.com/Warranty-Registration/>

For more details please visit our website, thanks for your support!

Authorised Dealer (Name): \_\_\_\_\_

Contact Details (Phone and Email): \_\_\_\_\_

Product No: \_\_\_\_\_

Purchase Date: \_\_\_\_\_

Inspection Date: \_\_\_\_\_

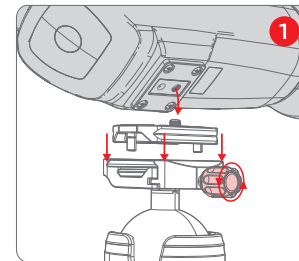
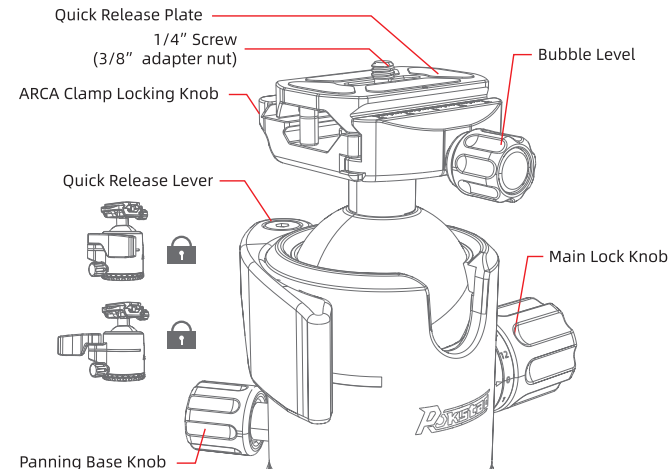
Warranty Date: \_\_\_\_\_

Return Date: \_\_\_\_\_

**\*Please ensure the Authorised Dealer completes the form above**

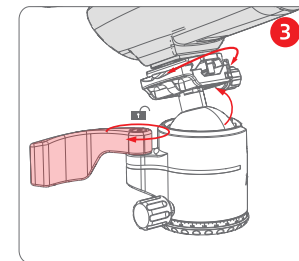


## PRODUCT INTRODUCTION



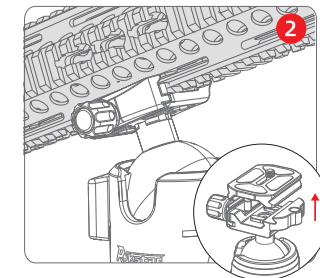
### 2. Picatinny rail installation

Loosen the locking knob on the quick release plate and remove the plate. Insert the Picatinny rail device into the slot. Tighten the locking knob to secure it.



### 1. Application of quick release plate

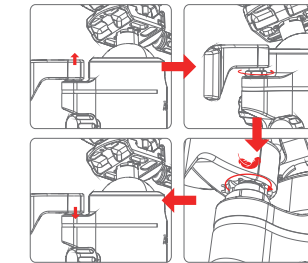
Release the quick release plate, loosen the locking knob. Align the screw hole of your device with the 1/4" screw on the quick release plate (or use a 3/8" adapter nut if necessary). Tighten the screw on the quick release plate. Attach the quick release plate back onto the clamp of your ball head platform and secure it.



### 3. Using the quick release lever

- ① Rotate the quick release lever clockwise to release the ball head, allowing you to adjust the device in various angle.
- ② Rotate the quick release lever anticlockwise to lock the device in place.
- The maximum vertical adjustment angle is 90°.

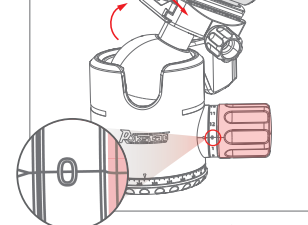
4



### 4. Adjusting the quick release lever

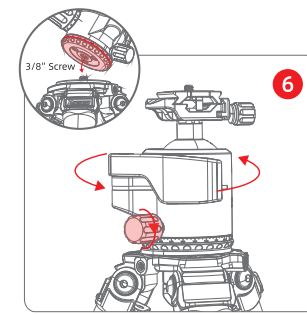
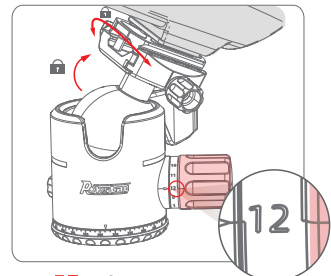
- Tension**
- ① Pull the quick release lever upwards until the mounting screw is fully exposed.
  - ② Rotate the quick release lever. Turning it counterclockwise reduces the clamping force; turning it clockwise increases the force. Adjust to the desired tension level.
  - ③ Press the quick release lever into the corresponding latch until it clicks securely into place.

5



### 5. Force adjustment of the main lock knob

The larger the numerical value on the main lock knob, the greater the locking force; the smaller the value, the lower the locking force. A lower locking force allows for fine adjustments of the angle.



### 6. Mount the ball head onto the tripod

- ① Tighten the Panning Base Knob clockwise to prevent the bottom of the ball head from rotating.
- ② Align the ball head screw hole with the 3/8" nut on the tripod and tighten clockwise to secure the ball head to the tripod.
- ③ Adjust the device angle so that the bubble level is horizontal.
- ④ Loosen the panning base locking knob to allow for horizontal rotation adjustment.

## Cautions:

- Do not overload product max capacity.
- Ensure Centre Column and/or Base Plate is tightened as much as possible by hand.
- The product is not suitable for use in temperatures below -20°C (-4°F) or above 70°C (158°F). The product is not suitable for use in salt water.
- Do not leave the product in direct sunlight, or against car windows for long periods of time.
- Remove the equipment when the product is not in use, or moving about.
- Do not use equipment lubrication on this product. Only use a standard lubricant or grease when necessary.

### Load Capacity:

RSBH-QS55: Maximum payload of 30kg

Exceeding these weight limits may compromise the stability and safety of the ball head.

For more information on related products, please visit:

<https://www.vectoroptics.cn/>

