

NATURE OBSERVATION

CATALOG 2026

VE VECTOR OPTICS®

INFINITY BEGINS WITH FIDELITY

Designed for uncompromising clarity and precision, Vector Optics' outdoor lineup is built to meet the demands of dedicated marksmen, hunters, and outdoor enthusiasts. From the range to the backcountry, our optics deliver exceptional brightness, rugged durability, and dependable performance. Proven in real-world conditions, they're the trusted choice when every detail matters.



Vector Optics



TABLE OF CONTENTS

BINOCULAR

MONOCULAR

RANGEFINDING

SPOTTING SCOPE

RANGE FINDER



BINOCULARS





COMPETITION

Vector Optics binoculars, for competition, are engineered for precision-focused shooting environments, offering sharp, high-resolution detail and rapid, efficient target observation—allowing shooters to assess results quickly and maintain full focus on their performance.

- High-Resolution Detail
- Efficient Observation

CONTINENTAL



/// SPECIFICATIONS

SKU	Magnification & Objective Lens Diameter	Eye Relief (mm)	Focus Type	Angular Field of View	Dimensions (mm / in)	Weight (net) (g / oz)
SCBO-05	8x42	19.5	Center	8.1 °	147x130 5.79x5.12	837 / 29.5
SCBO-06	10x42	12.2	Center	7°	147x130 5.79x5.12	810 / 28.6
SCBO-10	8x56	20	Center	7.2°	194x161 7.64x6.34	1269 / 44.8
SCBO-09	15x56	13.9	Center	4.0°	194x161 7.64x6.34	1302 / 45.9



PARAGON COMPACT

ROOF

HD



/// SPECIFICATIONS

SKU	Magnification & Objective Lens Diameter	Exit Pupil (mm)	Eye Relief (mm)	Focus Type	Angular Field of View	Dimensions (mm / in)	Objective Diameter (mm / in)	Weight (net) (g / oz)
SCBO-23	8x32	4	14.7	Center	8.1°	109x116 4.29x4.57	32 / 1.26	500 / 17.6
SCBO-24	10x32	3.38	13.6	Center	6.5°	109x116 4.29x4.57	32 / 1.26	500 / 17.6



BINOCULARS





HUNTING

Vector Optics binoculars, for hunting, are built for challenging outdoor adventures, featuring exceptional low-light visibility and rugged, all-weather durability—helping you spot game sooner and stay confident in the wild.

- Low-Light Clarity
- All-Weather Reliability

CONTINENTAL



/// SPECIFICATIONS

SKU	Magnification & Objective Lens Diameter	Eye Relief (mm)	Focus Type	Angular Field of View	Dimensions (mm / in)	Weight (net) (g / oz)
SCBO-14	8x42 OD Green	19.5	Center	8.1°	147x130 5.79x5.12	841 / 29.7
SCBO-15	10x42 OD Green	12.2	Center	7.0°	147x130 5.79x5.12	804 / 28.4

PARAGON



/// SPECIFICATIONS

SKU	Magnification & Objective Lens Diameter	Eye Relief (mm)	Focus Type	Angular Field of View	Dimensions (mm / in)	Weight (net) (g / oz)
SCBO-12	8x42 HD	19	Center	6.6°	150x123 5.91x4.84	717 / 25.3
SCBO-13	10x42 HD	19	Center	6°	150x123 5.91x4.84	711 / 25.1



BINOCULARS





HIKING

Vector Optics binoculars, for hiking, are designed for outdoor exploring, combining lightweight portability with true-to-life color accuracy and faithful image reproduction, so you can effortlessly enjoy every scenic view along your journey.

- Compact Portability
- True-To-Life Visuals

CONTINENTAL



/// SPECIFICATIONS

SKU	Magnification & Objective Lens Diameter	Eye Relief (mm)	Focus Type	Angular Field of View	Dimensions (mm / in)	Weight (net) (g / oz)
SCBO-25	8x32	17.5	Center	8.1°	137x118 5.79x5.12	550 / 19.4
SCBO-26	10x32	15.5	Center	6.5°	137x118 5.79x5.12	550 / 19.4

FORESTER



/// SPECIFICATIONS

SKU	Magnification & Objective Lens Diameter	Eye Relief (mm)	Focus Type	Angular Field of View	Dimensions (mm / in)	Weight (net) (g / oz)
SCBO-16	7x50	20	Center	6.67°	185x192 7.28x7.56	850 / 30
SCBO-17	10x50	18	Center	5.7°	185x192 7.28x7.56	850 / 30
SCBO-18	12x50	15	Center	5.2°	185x192 7.28x7.56	850 / 30



MONOCULAR



PARAGON



COMPETITION

With a lightweight, portable design, Vector Optics monocular, for competition, allows shooters to quickly locate and lock onto targets, while its reticle markings assist with distance estimation for precise long-range shooting.



/// SPECIFICATIONS

SKU	Magnification & Objective Lens Diameter	Objective Diameter (mm / in)	Min. Focal Distance (m / ft)	Lens Coating	Prism Glass	Angular Field of View	Length (mm / in)	Weight (net) (g / oz)
SCMO-01	8x42	42 / 1.7	2 / 6.5	Fully Multi-Coated	BaK-4	7.2 °	141 / 5.6	414 / 14.6

FORESTER



HUNTING

Compact and easy to carry, Vector Optics monocular, for hunting, delivers bright, wide-field views even in low light, with weather-resistant construction to support hunters in any condition.



/// SPECIFICATIONS

SKU	Magnification & Objective Lens Diameter	Objective Diameter (mm / in)	Min. Focal Distance (m / ft)	Lens Coating	Prism Glass	Angular Field of View	Length (mm / in)	Weight (net) (g / oz)
SCMO-04	8-16x56 ED	56 / 2.2	3 / 9	Fully Multi-Coated	BaK-4	4.5 - 3.15 °	193 / 7.6	521 / 18.4

FORESTER



HIKING

Designed for lightweight portability, Vector Optics monocular, for hiking, enables fast dynamic tracking while delivering true-to-life color, perfect for hikers and outdoor-watchers on the move.



/// SPECIFICATIONS

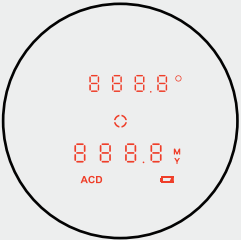
SKU	Magnification & Objective Lens Diameter	Objective Diameter (mm / in)	Min. Focal Distance (m / ft)	Lens Coating	Prism Glass	Angular Field of View	Length (mm / in)	Weight (net) (g / oz)
SCMO-03	8x32	32 / 1.3	2 / 6.5	Fully Multi-Coated	BK-7	8.0°	130 / 5.1	210 / 7.4
SCMO-02	10x50 ED	50 / 2.97	2.5 / 7.5	Fully Multi-Coated	BaK-4	6.0°	163 / 6.4	497 / 17.5



RANGEFINDING



PARAGON



Combining precision ranging with high-clarity observation, rangefinding binoculars enable faster, more continuous decisions in hunting and long-range shooting. By allowing users to identify, confirm, and range targets in one uninterrupted view, they eliminate device switching and improve accuracy in complex terrain.



/// SPECIFICATIONS

SKU	Magnification & Objective Lens Diameter	Exit Pupil (mm / in)	Range to Reflective Target (yd / m)	Range to Big Tree (yd / m)	Range to Deer (yds / m)	Accuracy (yd @ 1000yd)	Size (mm / in)	Weight (net) (g / oz)
SCBRF-02	10x42	4.2 / 0.16	≤ 2500	≤ 1500	≤ 800	±1	113x157 4.45x6.18	886 / 31.25



SPOTTING SCOPE





Vector Optics spotting scopes offer high-magnification, crystal-clear imaging for detailed target observation, with a reticle designed to assist precise distance estimation for accurate long-range shooting.

- High-Magnification Detailed Viewing
- Ranging

CONTINENTAL



/// SPECIFICATIONS

SKU	Magnification & Objective Lens Diameter	Exit Pupil (mm)	Eye Relief (mm)	Focus Type	Angular Field of View	Dimensions (mm / in)	Weight (net) (g / oz)
SCSS-02	12-40x60 FFP	3.0-1.0	30	Center	3.4-1.1°	/	1659 / 58.5
SCSS-03	20-60x80 FFP	4.0-1.3	30	Center	2.3-0.8°	/	2227 / 78.6

FORESTER PARAGON

ED

WITH
TRIPOD



/// SPECIFICATIONS

SKU	Magnification & Objective Lens Diameter	Exit Pupil (mm)	Eye Relief (mm)	Focus Type	Angular Field of View	Dimensions (mm / in)	Weight (net) (g / oz)
SCSS-01	Forester 20-60x60	3.0-1.0	16.5-13	Center	19.1 - 9.6°	/	713 / 25.15
SCSS-10	Paragon 8-24x50 ED	6.2-2.1	20-16.7	Center	5.0-2.5°	/	665 / 23.46
SCSS-11	Paragon 9-27x56 ED	6.2-2.1	20-16.7	Center	4.6-2.3°	/	709 / 25.01



RANGE FINDER





Precision-engineered for demanding conditions, Vector Optics rangefinders deliver accurate distance measurements and exceptionally clear imaging through advanced lens systems. Selected models connect to the app for advanced ballistic calculations, giving hunters, competitive shooters, and outdoor enthusiasts the confidence and reliability they need to make every shot count.

- Accurate Ranging
- Clear Imaging

FORESTER

PARAGON



	Forester 6x21 GenII	Paragon 6x25 GenII	Paragon 7x25 GenIII BDC
SKU	SCRF-16	SCRF-20	SCRF-S24
Exit Pupil (mm / in)	3.5 / 0.14	4.17 / 0.16	3.57 / 0.14
Range to Reflective Target (yd / m)	≤ 1600 / 1500	≤ 2000 / 1850	≤ 2400 / 2195
Range to Big Tree (yd / m)	≤ 900 / 825	≤ 1300 / 1200	≤ 1600 / 1463
Range to Deer (yds / m)	≤ 700 / 640	≤ 900 / 825	≤ 1100 / 1006
Range to Golf Flag (yd / m)	≤ 450 / 410	≤ 500 / 460	≤ 600 / 549
Accuracy (yd @ 1000yd)	±1	±1	±1
Display Type	LCD	LCD	OLED
Size (mm / in)	98.5x76 3.8x3	105x76 4.1x3	118x76 4.6x3
Weight (net) (g / oz)	130 / 4.6	183 / 6.5	184 / 6.5



SHOOTING BIPOD

CARBON FIBER



SWIVEL SPRING RETRACTABLE

RSCFS-06 | 6-9in

RSCFS-09 | 9-13.5in

-With Weaver Mount Adapter



SPRING RETRACTABLE

RSCFP-06 | 6-9in

RSCFP-09 | 9-13.5in

-With Weaver Mount Adapter



ALUMINUM ALLOY



SWIVEL SPRING RETRACTABLE

RSBPS-04 | 6-9in

RSBPS-05 | 9-13.5in

-With Weaver Mount Adapter



SPRING RETRACTABLE

SCBPB-01 | 6-9in

SCBPB-02 | 9-13.5in

-With Weaver Mount Adapter



SHOOTING BIPOD



SWIVEL SPRING RETRACTABLE

RSBP-20 | 6-9in

- Picatinny & ARCA Mount
- Aluminum Alloy
- With M-LOK Mount Adapter



SHOOTING TRIPOD



GROUND TRIPOD

RSAL-T01

- 6063 Aluminum Alloy
- Extended to 1.7m 67in
- Max Load 35kg 77lb



ELP V MOUNT TRIPOD

RSGR-06

- Aluminum Alloy
- 20cm 7.9in Folded
- Rised to 26cm 11.4in
- Max Load 6kg 21oz
- Twist Lock

MOUNTS & ACCESSORIES



BINOCULAR ADAPTER FOR TRIPOD MOUNT

RSBR-03

- 1/4"-20 Thread Bushing
- Compatible With ARCA
- 6061-T6 Aluminum Alloy
- Connect to Binocular with 1/4" Screw Hole



BINOCULAR REST TRAY MOUNT

RSBR-01 | BLACK ●

RSBR-02 | CAMO ●

- Made of Plastic and Nylon Polymer
- Non-Slip Base
- 1/4"-20 Thread Bushing



TRIPOD SADDLE MOUNT

RSGR-14 Hold Rifle in Width 35-65mm 1.4-2.5"

RSGR-16 Hold Rifle in Width 25-65mm 1.0-2.5"

- with QR Plate 1/4" & 3/8" Adapter
- Tension Control



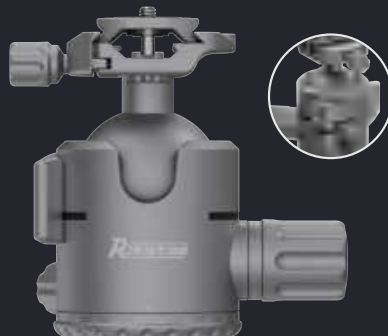
Dual Observation Rail

RSOR-01

- UNC 3/8" with 1/4" Option
- Two Mounting System



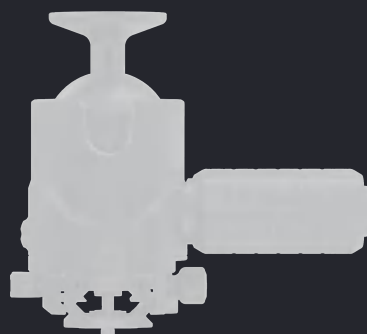
RIFLE HEAD *New*



56MM BALL HEAD QD

RSRH-03

- Tension Control
- Max 30kg 66lbs
- Fit RSCF-T03
- Ball Lock
- Dual Mounting: Picatinny & ARCA-Swiss
- with QR Plate 1/4" & 3/8" Adapter
- Micro-adjustment knob



55MM INVERTED GIMBAL HEAD

RSRH-30

- One-Hand QD Operation
- Max 30kg 66lbs
- Fit RSCF-T03
- Head Flexible +50°
- 360° Panorama
- Micro-adjustment knob

38MM BALL HEAD | RSRH-01 Max 20kg 44lbs | Fit RSCF-T01

56MM BALL HEAD | RSRH-02 Max 30kg 66lbs | Fit RSCF-T03

- Dual Mounting: Picatinny & ARCA-Swiss
- with QR Plate 1/4" & 3/8" Adapter
- Tension Control





TABLETOP TRIPOD

RSCF-T01

- 3 Sections
- Max 18kg 40lbs
- Tube Dia 22.5mm
- Extended to 38cm 15in
- Folded to 25cm 9.8in
- UNC 3/8" with 1/4" Adapter



GROUND TRIPOD

RSCF-T03

- 4 Sections
- Max 35kg 77lbs
- Tube Dia 34mm
- Extended to 170cm 67in
- Folded to 64cm 25in
- UNC 3/8" with 1/4" Adapter



**CARBON
FIBER
TRIPOD**

TABLE OF CONTENTS

CARBON FIBER TRIPOD

RIFLE HEAD

SHOOTING TRIPOD & BIPOD

MOUNTS & ACCESSORIES

SHOOTING BIPOD (CARBON FIBER)

SHOOTING BIPOD (ALUMINUM ALLOY)

VISIT US ON

Specializing in stable-shooting support systems, this lineup delivers reliable and innovative tripods, bipods, and other shooting supports. Each design is crafted with advanced materials, reinforced construction, and enhanced adjustment mechanisms, giving shooters a stable foundation and confidence as they grow in skill and refine their shooting style.



Rokstad



CATALOG

2026



BIPODS | TRIPODS | BALL HEAD

