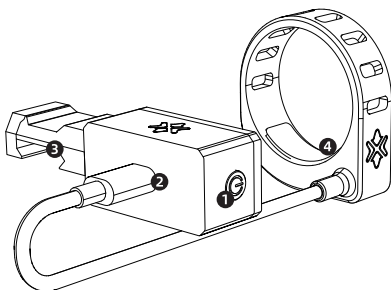
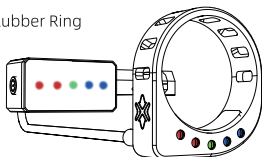


ELECTRIC ACD MOUNT USER MANUAL



- ① Function Button: For Power On/Off, Sensitivity, and Brightness adjustment.
- ② TYPE-C Charging Port: For charging or connecting the Rubber Light Ring.
- ③ ACD Weaver Mount Base
- ④ Illuminated ACD Light Rubber Ring



PRODUCT OVERVIEW

The Electric Mount and the Rubber Light Ring are designed to work in conjunction. The illumination sequence of the Electric Mount's indicators corresponds to that of the Light Ring.



BEFORE FIRST USE, FULLY CHARGE THE DEVICE VIA THE SUPPLIED USB-C CABLE TO ENSURE OPTIMAL PERFORMANCE.

POWER ON & OFF

Power On: Briefly press the Function Button once to power on the device.

Power Off: Press and hold the Function Button for approximately 3 seconds to power off the device.

*The device will automatically power off after remaining stationary for approximately 10 minutes.



TILT ALERT ILLUMINATION

Example:

At the default sensitivity level L3, the tilt alert illumination behaves as follows:

When level, the Green LED illuminates.

When tilted left between -1° and 1° , the second Red LED (from left to right) illuminates. If the tilt angle exceeds 5 degrees, all Red LEDs illuminate.

When tilted right between -1° and 1° , the first Blue LED (from left to right) illuminates. If the tilt angle exceeds 5 degrees, all Blue LEDs illuminate.

Refer to the chart below for specific details:

LEVEL L1



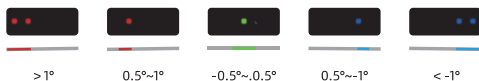
LEVEL L2



LEVEL L3



LEVEL L4



LEVEL L5



SENSITIVITY ADJUSTMENT

With the device powered on, quickly triple-press the Function Button to enter Sensitivity Adjustment mode.

The five LED indicators represent different sensitivity levels (L1-L5) respectively, and will cycle through the levels starting from the current mode.

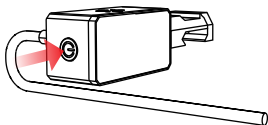
LED Indicator Logic:

LEVEL L1		FIRST RED LED FLASHES
LEVEL L2		SECOND RED LED FLASHES
LEVEL L3		THIRD GREEN LED FLASHES (DEFAULT POWER-ON LEVEL)
LEVEL L4		FOURTH BLUE LED FLASHES
LEVEL L5		FIFTH BLUE LED FLASHES

After selecting the desired mode, stop operating the button. Quickly triple-press the Function Button again to exit Sensitivity Adjustment mode. The system will automatically confirm and save the current selection after a few seconds.

BRIGHTNESS ADJUSTMENT

With the device powered on, quickly double-press the Function Button to enter Brightness Adjustment mode.



The brightness level will cycle sequentially: Medium Brightness → High Brightness → Low Brightness → ...



LOW BRIGHTNESS



MEDIUM BRIGHTNESS



HIGH BRIGHTNESS

The system exits adjustment mode automatically after 3 seconds of inactivity.

CHARGING PROGRESS INDICATOR

When connected to a charger, the LED indicators display the real-time battery level:

0-20%

2min



FIRST LED FLASHES

20-40%

2.5min



FIRST LED STEADY,
SECOND LED FLASHES

40-60%

24min



FIRST & SECOND LEDS STEADY,
THIRD LED FLASHES

60-80%

61min



FIRST, SECOND, & THIRD LEDS STEADY,
FOURTH LED FLASHES

80-100%



ALL LEDS TURN OFF,
INDICATING CHARGING IS COMPLETE

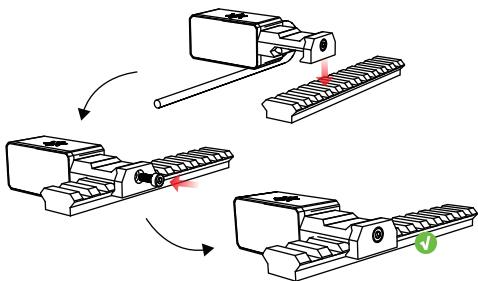


LOW-BATTERY WARNING:

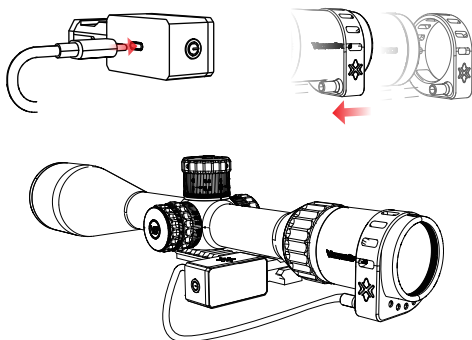
WHEN THE BATTERY LEVEL FALLS BELOW 20%, ALL FIVE LED INDICATORS WILL FLASH SIMULTANEOUSLY, REMINDING YOU TO CHARGE THE DEVICE PROMPTLY.

INSTALLATION INSTRUCTIONS

- ① Ensure the firearm is unloaded and the chamber is clear.
- ② Place the ACD Weaver Mount Base on your firearm's Picatinny /Weaver rail system.
- ③ Use a torque wrench to tighten screws. (Recommended torque value: 1.38N·m)



- ④ Connect the Illuminated ACD Light Rubber Ring to the TYPE-C port on the mount. (Optional)
- ⑤ Position the Illuminated ACD Light Rubber Ring around the eyepiece (ocular lens) of your riflescope.



WARRANTY

Your product is warranted free of defects in materials and workmanship for a period of 1 year from the time of purchase by the original owner. In the event of a defect under this warranty, we will, at our option, repair or replace the product at no charge to you. If we can't repair your product, we will replace it with a product of equal or better physical condition.

This warranty does not cover damages caused by misuse, improper handling, loss, theft, deliberate damage, or cosmetic damage. Also, this warranty is null and void if modification or maintenance is provided by someone other than the manufacturer. This warranty is non-transferable.

For products not directly purchased from us, please contact the local dealer for applicable warranty info.

