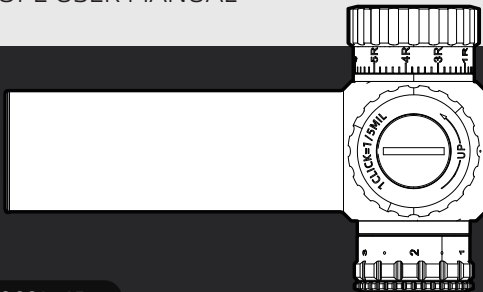


VECTOR OPTICS<sup>®</sup>

# TAURON

SCOPE USER MANUAL



SCOL-45

## ***READ IT BEFORE USE!!!***

READ AND UNDERSTAND THE CONTENTS OF YOUR FIREARM'S AND SCOPE MANUAL. FOLLOW ALL STANDARD SAFETY PRECAUTIONS AND PROCEDURES DURING FIREARM OPERATION.

▼ *Scan the QR code to learn more about VectorOptics*



VECTOROPTICS



USER MANUAL



FACEBOOK



INSTAGRAM



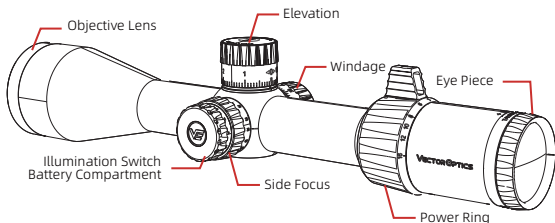
NEVER LOOK AT THE SUN THROUGH THE SCOPE (OR ANY OTHER OPTICAL INSTRUMENT).

IT MAY PERMANENTLY DAMAGE YOUR EYES.

MAKE SURE FIREARMS ARE UNLOADED AND POINTED IN THE SAFE DIRECTION.

# CONTENTS

EYEPIECE FOCUSING .....	4
MOUNTING .....	5
ZEROING .....	5
MAGNIFICATION ADJUSTMENT .....	7
ZERO STOP .....	8
PARALLAX ADJUSTMENT .....	9
TURNING ON & ILLUMINATION ADJUSTMENT .....	10
BATTERY EXCHANGE .....	10
SEALED, WATERPROOF AND FOGPROOF .....	10
MAINTENANCE & STORAGE .....	11
RETICLE .....	12
WARRANTY .....	13
NOTES .....	15



## EYEPiece FOCUSING

The eyepiece is designed to provide a precise fast focus at certain eye relief. The eyepiece will focus faster than your eye can compensate for any inaccuracy in your adjustment.

Set your scope at max magnification and set the parallax to infinity (if adjustable). Turn back out of the focus ring until the reticle is completely fuzzy. Look through the scope a plain background. Turn the eyepiece focus ring until the reticle itself is maximum sharp clear. Having made your adjustment, re-check it quickly.



## MOUNTING

The scope is installed on the gun by means of a pair of scope rings or a one-piece scope mount. Use quality scope rings or mount with a base designed to fit your particular rifle. The scope shall be mounted without touching either the barrel or the receiver. For safety reasons, allow at least 3 inches of clearance between the scope and your eyes when shooting. Slide scope forward or backward to acquire the proper eye relief that allows you to see the full field of view. Rotate the scope in the rings, make sure the reticle pattern is vertical/horizontal to your sight and the elevation adjustment is on the top. Tighten all mounting screws to fix the scope firmly on the rifle.



Do not over-tighten the rings, or it may damage your scope. Max 18-22 in/lbs (2.034-2.468 N.m) for ring top screws and 30-35 in/lbs (3.39-3.955 Nm) for ring base screws.

## ZEROING

The scope features finger-adjustable audible-click elevation and windage adjustments. Referring to the point of impact you will need to adjust both windage and elevation turrets. Elevation is the vertical (up-and-down) adjustment, usually on the top of the scope. Windage is the horizontal (left-to-right) adjustment, usually on the right of the scope.

The scope feature 1/10 MIL (Milliradian) windage & elevation adjustment with audible clicks, meaning that 1 click moves the point of impact = 1cm at 100 meters (0.36" at 100 yards) .

With the scope mounted, rest the firearm onto a solid support and aim at a target 100 yards away. Slowly shoot a small 3 to 5 round test group onto your target. Adjust windage & elevation screws in the direction you want to move the bullet impact.

Should your impacts be below your point of aim, dial UP to reach zero. Should your impacts be left to your point of aim, dial R(right) to reach zero. Each click of adjustment moves the point of impact. Shoot another 3 to 5 round test group. Repeat until you are satisfied with the point of aim.

## **MAGNIFICATION ADJUSTMENT**

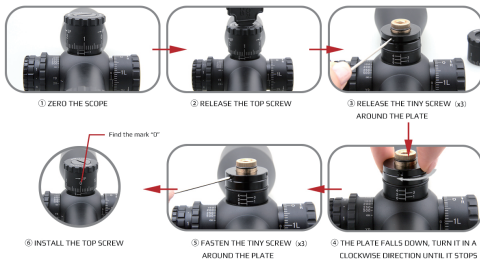
To change magnification, simply turn the power selector ring, choose the desired power depending on the shooter's preference, and align the number with the index dot.

Lower magnification provides a wider field of view and a brighter image. It is helpful in low-light, close-range shooting, and moving targets.

Higher magnification should be reserved for precise long-range shooting, which has a narrower field of view and dimmer image.

## ZERO STOP

Zero Stop is a mechanism that prevents you from dialing your scope elevation beyond your pre-set zero. After sighting your scope and setting the zero-stop, you have the zero point at your chosen specific distance. No matter how many elevation clicks you dial, turn the elevation turret down to the pre-set zero-stop point to return to your original zero distance.



FOR HOW TO SET THE ZERO STOP ON TAURON SFP , PLEASE SCAN QR CODEOR  
VISIT THE LINK: <https://youtu.be/c3mqgLXFako>



## PARALLAX ADJUSTMENT

The scope features a side focus turret adjustment that allows you to tune the target image for maximum sharpness and re-adjust the parallax-free range, for any range from 10 yards to infinity.

To change the focus range according to the target distance, simply turn the side focus turret and align the number with the distance index dot. The final focus is to look through the scope to check whether the target is sharply focused. If not you need to slightly turn the side focus turret until the target image is maximum sharpness.

Another final focus check is to look through the scope, move your head forth and back slightly by watching for any shift of the reticle on the target (parallax). If the shift is observed, you need to slightly turn the side focus turret until the shift is eliminated.

FYI: WHAT IS PARALLAX? PLEASE VISIT:

<https://www.vectoroptics.com/about/view/id/65.html>



## **TURNING ON & ILLUMINATION ADJUSTMENT**

Placed on the left side of the scope, the illumination adjustment knob controls the intensity level. It lights up all or a portion of the reticle. The scope has 6 intensity levels red. Turn the knob to turn on the illumination. Go on turning the knob will adjust the intensity level. You can adjust the intensity level to #6, which is the brightest setting. Set the knob to 'o' will turn the illumination off.

## **BATTERY EXCHANGE**

Your scope illumination is powered by 1 piece of CR2032 lithium button battery. To insert, remove or replace the battery: Release the battery compartment cover. Remove the used battery from the battery compartment. Insert a new one from a reputable manufacturer with the positive (+) side UP. Screw on the battery compartment cover.



Caution: Should the illumination grows dim or not turn on, you will need to exchange the battery.

## **SEALED, WATERPROOF AND FOGPROOF**

The scope is nitrogen-purged to remove any vestige of internal moisture, also has an O-ring to prevent the entry of dust or moisture.

## MAINTENANCE

Your scope, though amazingly tough, is a precision instrument that deserves reasonable cautious care.

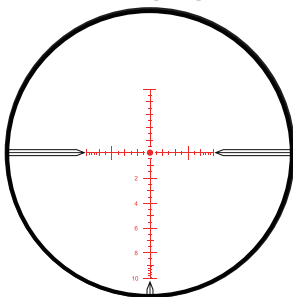
- When cleaning the lens, first blow away any dirt and dust, or use a soft lens brush.
- Fingerprints and lubricants can be wiped off with lens tissue, or soft clean cotton cloth, moistened with lens cleaning fluid.
- All moving parts of the scope are permanently lubricated. Do not try to lubricate them.
- No maintenance is needed on the scope's exterior surface, except to occasionally wipe off dirt or fingerprints with a soft cloth.
- Use lens covers whenever convenient.

## STORAGE

Avoid storing the scope in hot places, such as the passenger compartments of vehicles on hot days. The high temperatures could adversely affect the lubricants and sealants. A vehicle's trunk, a gun cabinet, or a closet is preferable. Never leave the scope where direct sunlight can enter either the objective lens.

# RETICLE PATTERN

## MPX1(MIL)



FOR MORE RETICLE & HOW TO USE THE RETICLE, PLEASE SCAN QR CODE OR VISIT THE LINK :

<https://www.vectoroptics.com/public/uploads/files/20250326/2fb610b969b5b9a37324dc8af20e3934.pdf>



## WARNING

- **INGESTION HAZARD:** This product contains a button cell or coin battery.
- **DEATH:** or serious injury can occur if ingested.
- A swallowed button cell or coin battery can cause internal chemical burns in as little as 2 hours.
- **Keep** new and used batteries **out of reach of children**.
- **Seek immediate medical attention** if a battery is suspected to be swallowed or inserted inside any part of the body.
- Battery misuse or abuse may result in leakage, fire or explosion.





## **VECTOR OPTICS TAILED VIP LIFETIME WARRANTY**

Your VectorOptics Tauron line products are covered by our T-VIP lifetime warranty. We will, at our option, either repair or replace your VectorOptics product without any cost if it is damaged or defective. If we can't repair your damaged product, we will replace it with a brand new one in perfect condition. We proudly stand behind our products. You have our word that we will do what it takes to retain your business as a satisfied customer. You can count on our T-VIP lifetime warranty.

- Unlimited full lifetime warranty.
- Reply to you in 1 working day.
- Free repair or replacement.
- Fully transferable.
- No invoice or receipt is needed.
- No question asked, however, we do appreciate your feedback.
- We pay for shipping back to you.

This warranty does not cover product loss, theft, deliberate damage, abuse, misapplication, or modification. This warranty does not apply to electronic components or batteries.

For warranty service please contact our Customer Service Department online at [service@vectoroptics.com](mailto:service@vectoroptics.com) for return instructions. If you need to return the product, please ensure the shipment and keep the tracking records. We can not be responsible for your product until it has been received by our Customer Service Department.

For products not directly purchased from us, please contact the local dealer for applicable warranty info.

Any warranty must be registered and complete warranty terms by the link:

[warranty.vectoroptics.com](http://warranty.vectoroptics.com)

We thank you for your business. Be Safe and Have Fun!



## NOTES

---

---

---

---

---

---

---

---

---

# TAURON

## SCOPE

Manual # Tauron Series

2025032601



🌐: [www.vectoroptics.com](http://www.vectoroptics.com)

@vector\_optics